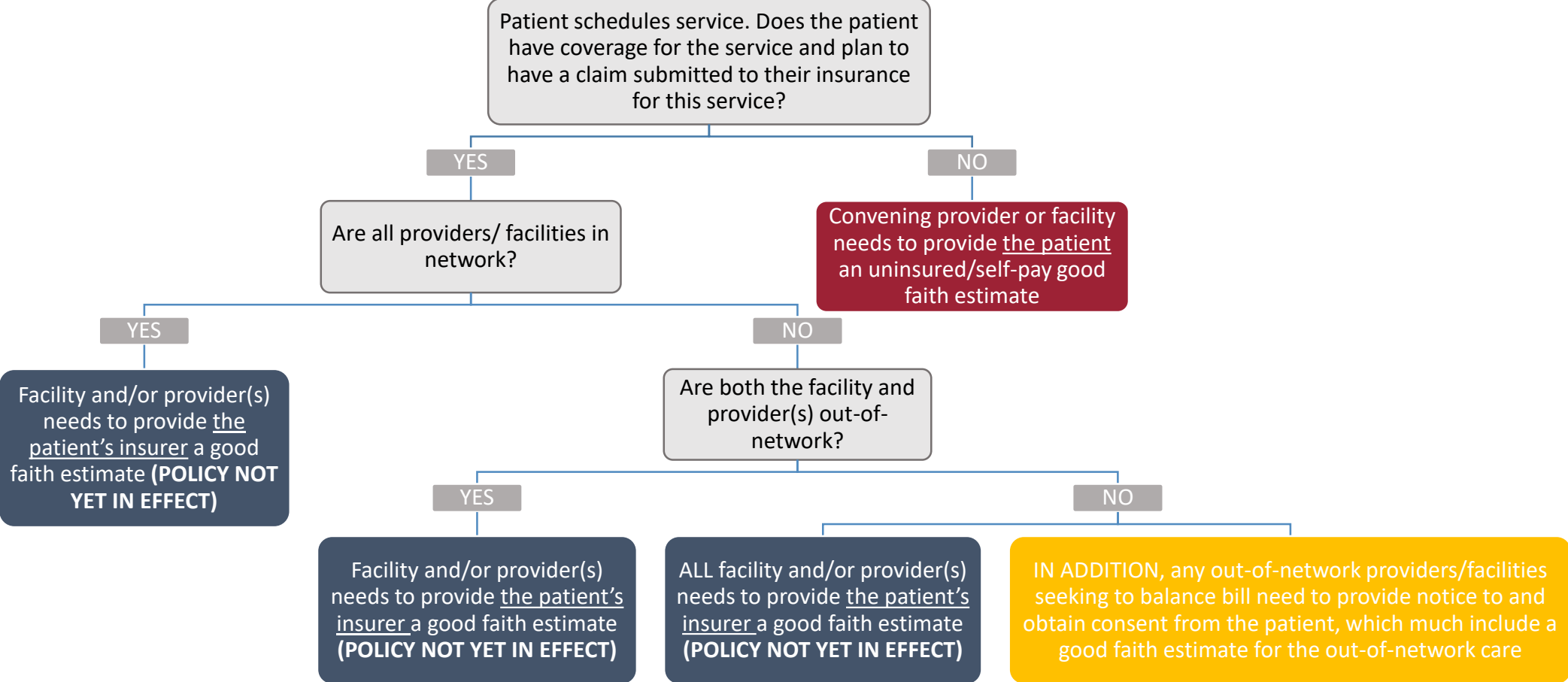


# When Must a Provider Give a Good Faith Estimate for a Scheduled Service?



# When Do Good Faith Estimates Apply to Emergency Services, including Post-stabilization Services?

Good faith estimates are not required for emergency services up to the point of stabilization (as defined by EMTALA). However, they may be required for care provided post-stabilization as part of the notice and consent process, if the provider is eligible to seek the patient's consent to balance bill.